

REVERSE

Tech Rider

Date of issue: November 2020

Technical Contact:

Technical Manager: Cyril Mulon
+ 33 6 32 07 08 89
technique@cieburnout.com

Technican on tour: Guillaume Giraud
+ 33 6 09 20 52 36
guillaume.giraud@neuf.fr

Administration:

Sébastien Castella
+33 7 80 05 62 56
administration@cieburnout.com

Mailing Address:

*10 rue champeil - 63000 Clermont-Ferrand
FRANCE*

Production and Booking:

Manon Martin
+33 6 18 98 34 12
production@cieburnout.com

The Venue shall provide as complete as possible technical specifications (description of the stage and the rigging possibilities in the auditorium, masking equipment, light and sound equipment, technical contacts...) with a ground plan and a cross section of both the auditorium and the stage at a scale of 1/50 if possible. An Autocad file of the venue is also required.

A technical schedule and a specific lighting plot with the stage configuration adapted to the venue will be sent in return.

GENERAL INFORMATION

Running time: 25 minutes

Company:

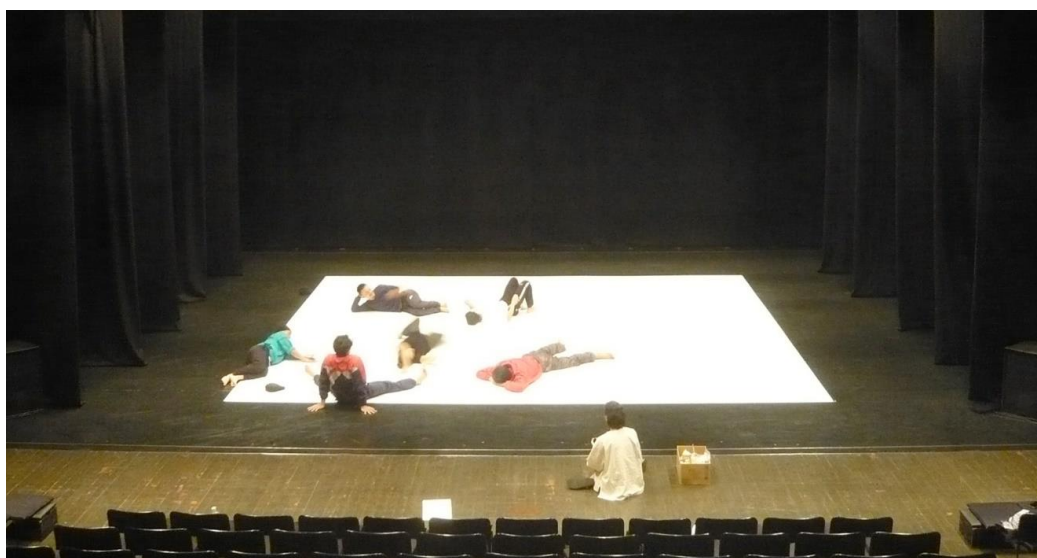
- 5 dancers (men)
- 1 technical manager / lighting and sound manager
- 1 choreographer
- 1 tour manager (occasionally)

STAGE CONFIGURATION

The performing space is an Italian type black box. A black marley covers the entire stage.

The scenography is a white rectangular floor, 7m wide and 6m deep, composed of specific plastic sheets provided by the company. The sheets are taped together from their underside and then taped onto the black marley, with white marley tape. The dancers perform on this slippery white floor, with their head always touching the floor.

4 electro-luminescent wires are also taped on the floor and create glowing lines.



TECHNICAL SPECIFICATIONS

STAGE

- Italian type black box (4 to 5 rows of legs with border): 11m wide x 9m deep [*minimum size: 9m x 8m*]
- Total width from side wall to side wall: 15m [*minimum 12m*]
- Total depth from apron to back wall: *minimum 10m*
- Height of fly-bars or grid: *minimum 6m*
- Black marley all over the stage
- Main curtain

Equipment provided by the company:

- 50 white plastic sheets (polypropylene)
- transparent tape (for the e.l. wires)

Setup of our white floor

Duration of the setup: $\pm 2 \frac{1}{2}$ hours with 3 technicians.
Please provide 5 rolls of white pvc marley tape (25m long).

Before assembling the sheets (5 columns of 6 horizontal sheets) it is necessary to precisely draw on the marley a 7m x 6m rectangle and the center lines DS/US and SL/SR (the position will be specified on the lighting plot adapted to the venue).

The black marley has to be very clean before taping the white floor.

The white sheets are labelled A/B/C/D/E (from SR to SL) and 1 to 6 from DS to US.

1) Assemble each column upside down placing the tape on the "underside" of each sheet, one after the other, on their larger edge, from DS to US, with white pvc marley tape:

- line each sheet up and place them carefully in order to leave a 1 or 2mm gap between them (do not tape them edge to edge),
 - do not stretch the tape: lay the tape flat on the sheets.
- The length of the stripe of tape should be 3cm shorter on each side than the length of the sheet.

Once a column is done, cautiously turn top side facing up.

2) Tape each column together from beneath, top side facing up:

- do not stretch the tape: lay the tape flat on the floor, glued side facing up,
- carefully place each column in order to leave a 1 or 2mm gap between them (do not tape them edge to edge).



3) Finally place the whole white floor onto the rectangle. Tape it nicely from above with white pvc marley.

NOTICE

The white plastic sheets are fragile and have to stay white. Please do not walk on them with shoes.
Please provide extra clean black marley to cover our white floor during the setup and rehearsals of other companies.

EQUIPMENT OF THE COMPANY

The set equipment of the company is delivered and picked up by a freight company. The delivery is usually scheduled in the morning of the load-in. The pickup is usually scheduled in the morning of the day following the strike (without the presence of the company manager).

- 1 wooden case with wheels for the white plastic sheets (size: 116 x 147 x 19 cm / weight: 45kg)
- 1 red suitcase for the costumes (size: 65 x 45 x 25 cm / weight: 16kg)
- 1 green suitcase for the lights and the stage (size: 75 x 60 x 25 cm / weight: 20kg)

Please store the wooden case flat (only tip it on the side with wheels to move it).

LIGHTS (see attached *Theoretical Lighting Plot*)

The lights and the sound desks are side by side: the technical manager of the company operates both desks during the show.

- 2kw PC or Fresnel: 4
- 1kw PC or Fresnel: 7
- 1kw zoom profile 28°-54°: 8 (floor)
- 1kw zoom profile 15°-35°: 6 (foh)
- PAR 64 CP 61 NSP: 4
- PAR 64 CP 62 MFL: 20

- 8 floor stands

- 3kw channels: 33 with 4 on the floor
- Please provide 1x16A AC and 1xDMX (3 points if possible) on the floor upstage left
- Light desk **Avab Cobalt** (chasers and effects already programmed on a show file)
- Heights of the lighting fly-bars: 6.7m and 7.5m

- LEE color filters: 075 – 161 – 202 – 506 – 747
- ROSCO frost: 114 – 119

Equipment provided by the company:

- 1 dimmer rack 16A 4 channels (+ DMX adapter 5/3)
- 4 electro-luminescent wires with controller and 12V voltage transformer

SOUND

The lights and the sound desks are side by side: the technical manager of the company operates both desks during the show.

The sound system needs to use professional speakers and processors (L Accoustic, Meyer, D&B, Nexo, Amadeus etc...) and must be suitable for the size and the shape of the house. In case of a large house and/or with balconies, please provide extra speakers with delay.

Position of the speakers:

- FOH: stereo sound system suitable for the house with independent subwoofers on the proscenium
- Stage monitors: 4 speakers (12" or 15") stereo (2 separate channels) on stands in the side wings ("front monitors" in the first wing; "upstage monitors" in the wing before the last one)

Mixing desk: *the soundtrack is played from the computer of the company*

- Professional digital sound desk which allows controlling each speaker independently (eq, volume, delays...)
- 2 DI + 1 mini-jack stereo cable to connect the headset output of the computer to the mixing desk
- 1 CD player (*spare*)
- for the rehearsals only: 1 hand held wireless microphone if possible and 1 talkback mic
- Clearcom capabilities between the light&sound desk and the stage

REQUIRED CREW & WORKING HOURS

The complete setup of the lights (with color filters on and soft patch done), the sound equipment and the black box must be done before the arrival of the company, in accordance to the provided adapted lighting plot suited to the venue.

The day of the performance:

- Focusing of the lights: 4 hours (1 lighting manager + 2 lights technicians, 1 stage manager/fly manager)
The focusing is done without the white floor (markings of the white floor are necessary).

- Setup of the scenography: during the focusing of the lights, each column is assembled backstage in a clean and well-lit space. When the focusing is complete, we will finish the setup of the entire white floor with the e.l. wires. Total set up time: 2 ½ hours (1 stage manager + 2 stage technician)
- Rehearsal/Cueing/Sound check/Run through: 2 ½ hours (1 stage manager, 1 lighting manager, 1 sound manager)
- Performance: 25 minutes (1 stage manager + 1 stage technician, 1 lighting manager, 1 sound manager)
- Load-out: 1 hour (1 stage manager + 1 stage technician, 1 lighting manager)

N.B.: the black marley has to be very clean before taping the white sheets of our scenography.

As part of a shared evening, our performance should open the evening. At the end of our performance, it is necessary to remove the e.l. wires and cover our white floor with extra rolls of clean black marley. Please allow 10 to 15 minutes to complete the changeover with 3 technicians.

WARDROBE

The costumes are identical for the 5 dancers (all items are labelled with their name: Geoffroy, Hugo, Mickael, Romain, Razy):

- 1 black buttoned down polyester cardigan with the back made out of coir
- 1 pair of black polyester trousers
- 1 black long-sleeved spandex t-shirt
- 1 white long-sleeved cotton shirt
- 1 black cap, with coir on the outside and foam on the inside
- 1 removable piece of padded rubber used to strengthen the cap
- 1 pair of black and yellow knee pads

Cleaning: 4 hours in the morning of our arrival

Washing and drying:

- 1 - Wash the trousers, cardigans and caps on a wool cycle (30° wash and 800 spin max). Hang the trousers and the cardigans immediately.
- 2 - Before washing the white shirts on a short 40° cycle, please rub the shoulders and the wrists with soap. Dry on a delicate cycle.
- 3 - Wash the knee pads, cap pads and spandex t-shirts on a short 30° or 40° cycle. Dry on a delicate cycle.

Ironing:

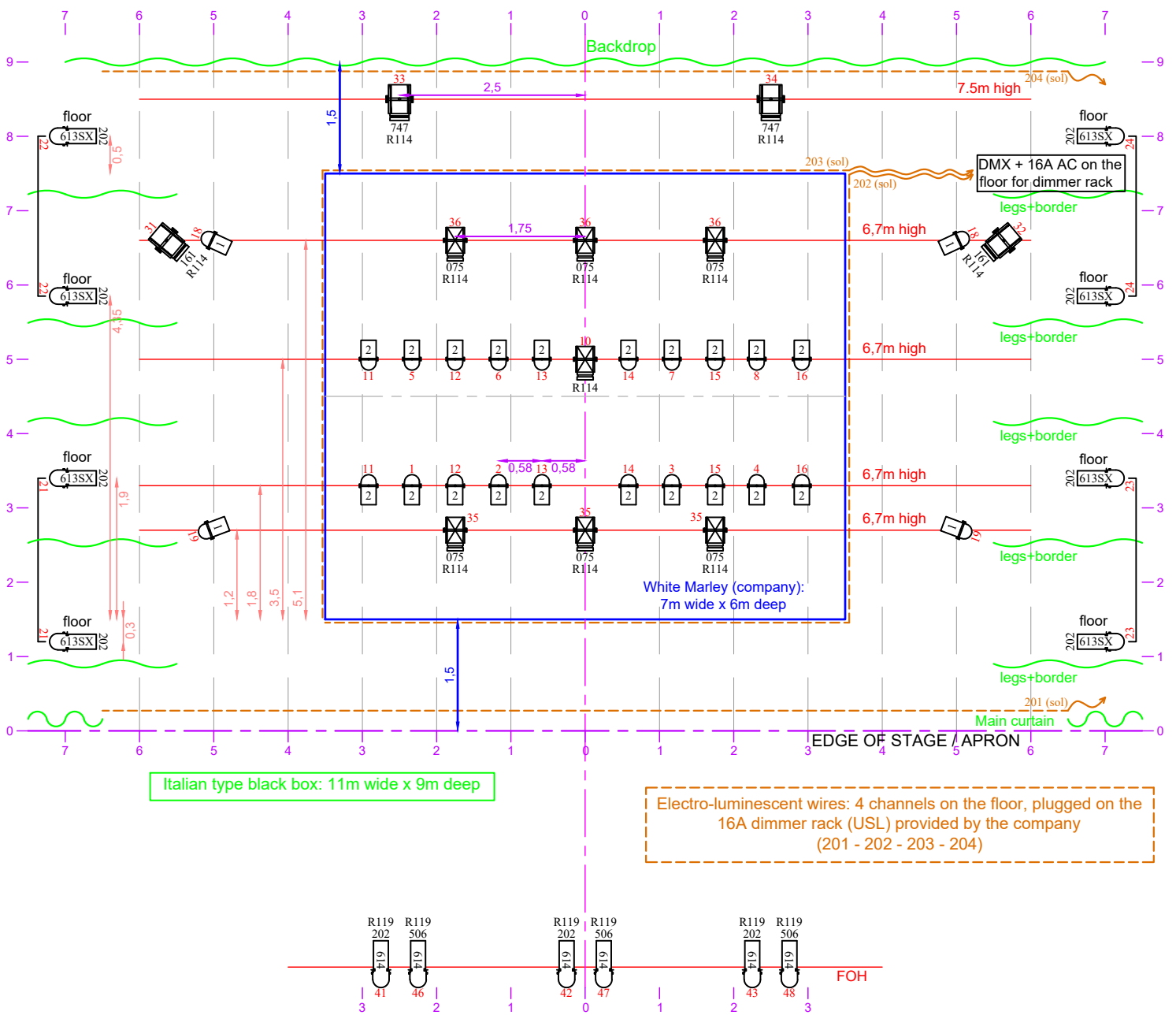
- Iron the white shirts normally and please avoid marking the creases along the sleeves
- Do not iron the trousers directly: instead steam them or use a damp cloth
- Steam the cardigans or lightly iron them

Maintenance of the caps:

- When the caps are clean and dry, remove the bobbles inside and outside with a razor
- Check that the top of the caps has no tears. Please mend if necessary

DRESSING ROOMS & CATERING

- 3 dressing rooms for the dancers with WC, shower, towels and soap
- 1 dressing room/production office, with a window, for the technical manager and touring manager, with an internet/WIFI access
- Please provide still water (water fountain), fresh fruit (banana), unsweetened almonds and nuts, cereal and chocolate bars, honey, fruit juice, coca-cola, tea and coffee
- Some dancers have vegetarian diet or halal diet



Italian type black box: 11m wide x 9m deep

Electro-luminescent wires: 4 channels on the floor, plugged on the 16A dimmer rack (USL) provided by the company (201 - 202 - 203 - 204)

- 2kw PC or Fresnel x 4
- 1kw PC or Fresnel x 7
- PAR 64 CP 61 NSP x 4
- PAR 64 CP 62 MFL x 20
- 1kw Profile 28°-54° x 8 (floor)
- 1kw Profile 15°-35° x 6 (foh)

8 floor stands
 3kw channels: 33 (4 on the floor)
 1 x 16A AC and 1 x DMX (3 points if possible) on the floor
 usptage left for the dimmer rack provided by the company

Filters List		
LEE 075	1kw pc	6
LEE 161	2kw pc	2
LEE 202	1kw profile	11
LEE 506	1kw profile	3
LEE 747	2kw pc	2

Frost		
Rosco 114	1kw pc	7
	2kw pc	4
Rosco 119	1kw profile	6

REVERSE
 Jann Gallois / Cie Burnout
 Theoretical Lighting Plot
 November 2020
 technique@cieburnout.com

