

# **COMPACT**

*A duet choreographed by Jann Gallois*

## **TECH RIDER**

### **Technic**

Cyril Mulon  
+ 33 6 32 07 08 89  
technique@cieburnout.com

### **Touring**

Manon Martin  
+33 6 18 98 34 12  
production@cieburnout.com

### **Production**

Sébastien Castella  
+33 7 80 05 62 56  
administration@cieburnout.com

*Mailing address:*

*2, rue Valmy – 63100 Clermont-Ferrand – FRANCE*

### **Artist**

Cie BurnOut  
Jann Gallois  
+33 6 36 88 24 12  
janngallois@cieburnout.com

*Maison des associations – 3 place Anatole France – 93310 Le Pré Saint Gervais – FRANCE*

## GENERAL INFORMATION

Running time: 22 minutes  
1 female dancer and 1 male dancer  
1 technical manager (light, sound, stage)

The Venue shall provide as complete as possible technical specifications (description of the stage and the rigging possibilities in the auditorium, masking equipment, light and sound equipment, technical contacts...) with a ground plan and a cross section of both the auditorium and the stage at a scale of 1/50 if possible. An Autocad file of the venue is also required.

**A technical schedule and a specific lighting plot with the stage configuration adapted to the venue will be sent in return.**

## TECHNICAL SPECIFICATIONS

### **STAGE**

- Italian black box: 10m wide x 8m deep – *minimum size: 6m x 6m*
- Wall to wall width: *minimum 9m*
- Black dance floor all over the stage
- FOH curtain if possible

### **LIGHT EQUIPMENT**

*(see attached standard lighting plot)*

*The light and the sound desks are side by side: the technical manager of the company operates both desks during the show.*

- 2kw PC: 5
- 1kw PC: 26
- PARCAN 64 CP61 NSP: 2
- PARCAN 64 CP62 MFL: 10
- 1kw profile 25°-50°: 8
  
- 8 booms for sidelights (height: floor / 1,40m)
- 8 floor stands
  
- 30 channels of 3kw with 12 on the floor
- Light desk with programmable cues and crossfade
  
- LEE filters: 008 – 152 – 169 – 201 – 202 – 205 – 249 – 702
  - 008: 5 PC 2kw
  - 152: 6 PC 1kw
  - 169: 1 PC 1kw + 2 PAR
  - 201: 14 PC 1kw + 8 découpes 1kw
  - 202: 5 PC 1kw
  - 205+249: 2 PAR
  - 702: 8 PAR
  
- Rosco Frost: 114 – 119 – 132
  - 114: 6 PC 1kw, 5 PC 2kw
  - 119: 12 PC 1kw
  - 132: 8 profiles 1kw

## ***SOUND EQUIPMENT***

*The light and the sound desks are side by side: the technical manager of the company operates both desks during the show.*

- 1 professional CD player with autocue
- Standard FOH sound system with subwoofer
- 4 monitor boxes on stage (2 upstage, 2 downstage), installed in the wings, non-visible from the audience. Good bass and treble levels
- 1 sound desk
- EQ for FOH
- Clearcom between stage and light/sound booth

## ***REQUIRED CREW & WORKING HOURS***

The setup of the light equipment and black box is done before the arrival of the company, according to the light plot adapted to the venue that will be sent to you.

The day of the performance:

Light focusing: 3 hours

Rehearsal/Cueing/Sound check/Run through: 2 hours

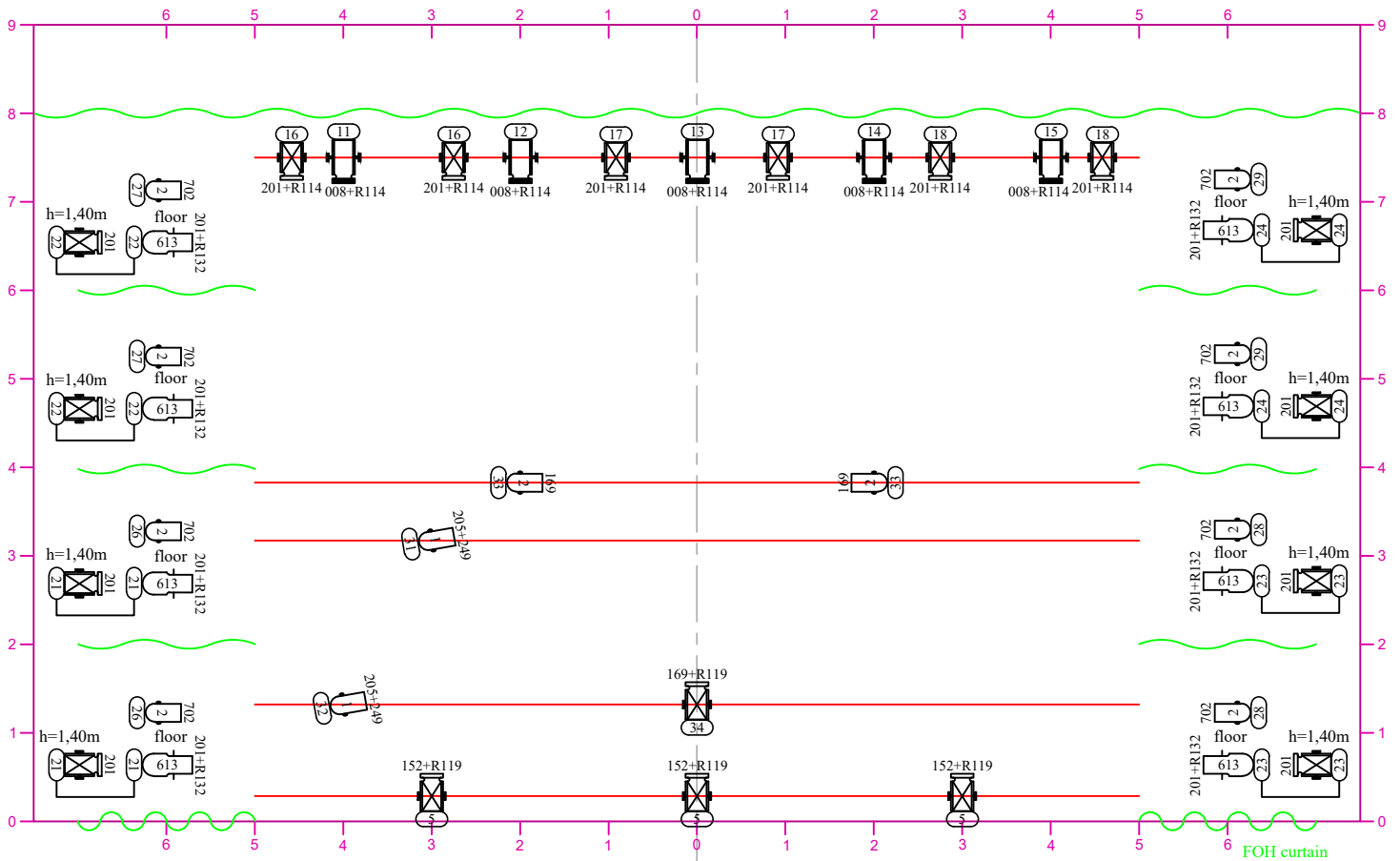
The dance floor needs to be very clean because most of the choreography is on the floor.

Required crew of the venue: 1 lighting manager + 1 light technician, 1 sound manager, 1 stage manager.

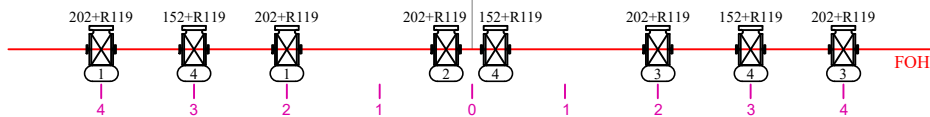
Please provide costume cleaning (washing and ironing) in case of several performances.

## ***DRESSING ROOMS & CATERING***

- 1 dressing room for the dancers with WC, shower, towels and soap.
- 1 dressing room for the technical manager, if possible with an internet/WIFI access.
  
- Please provide still water in bottles, dry fruits, fresh fruits (banana), chocolate bars, nuts, almonds, honey, fruit juice, tea.
- Both dancers are vegetarians, gluten and dairy intolerant.

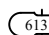



Italian Black Box : 10m wide x 8m deep



 2kw PC x 5

 1kw PC x 26

 1kw profile 25°-50° x 8

 PARCAN 64 CP61 NSP x 2

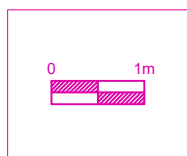
 PARCAN 64 CP62 MFL x 10

8 booms for sidelights (height: floor / 1,40m)  
8 floor stands

30 channels of 3kw, with 12 on the floor  
Height of the lighting pipes: 6m

LEE Filters:  
008 - 152 - 169 - 201 - 202 - 205 - 249 - 702

Rosco Frost: 114 - 119 - 132



**COMPACT**  
Jann Gallois Cie BurnOut

Standard Lighting Plot  
December 2019

technique@cieburnout.com