

IMPERFECTO

Jann Gallois / David Coria

Tech Rider

Date of issue: March 2024

Technical Contacts:

Technical Manager / Lighting Manager (France):

Cyril Mulon
+ 33 6 32 07 08 89
technique@cieburnout.com

Sound Manager (Spain):

Chipi Cacheda
+ 34 616 862 174
chipicacheda@gmail.com

Administration (France):

Valentine Boudon
+33 6 77 99 19 79
administration@cieburnout.com

Production and Booking (France):

Manon Martin
+33 6 18 98 34 12
production@cieburnout.com

GENERAL INFORMATION

Running time: 67 minutes

Company:

- 2 dancers (1 woman, 1 man)
- 3 musicians (1 drummer / percussionist, 1 singer / guitar player, 1 pianist)
- 1 technical manager / lighting manager
- 1 sound manager
- 1 producer / tour manager (occasionally)

The venue shall provide complete technical specifications (description of the stage and rigging possibilities of the space; masking, light and sound equipment; technical team's contacts...) including a ground plan and a cross section of both the house and stage at a preferable scale of 1/50. An Autocad file (autocad 2010 format) of the venue is also required.

A technical schedule and a specific lighting plot with the stage configuration adapted to the venue will be provided in return.

*Cie BurnOut / Jann Gallois
janngallois@cieburnout.com*

Maison des associations - 3 place Anatole France - 93310 Le Pré Saint Gervais

STAGE CONFIGURATION

The stage is set with no masking (no legs, no borders) and reveals the entire flying system, the fly galleries, the grid, the lights and the sound equipment. The main curtain is used at the beginning of the performance.

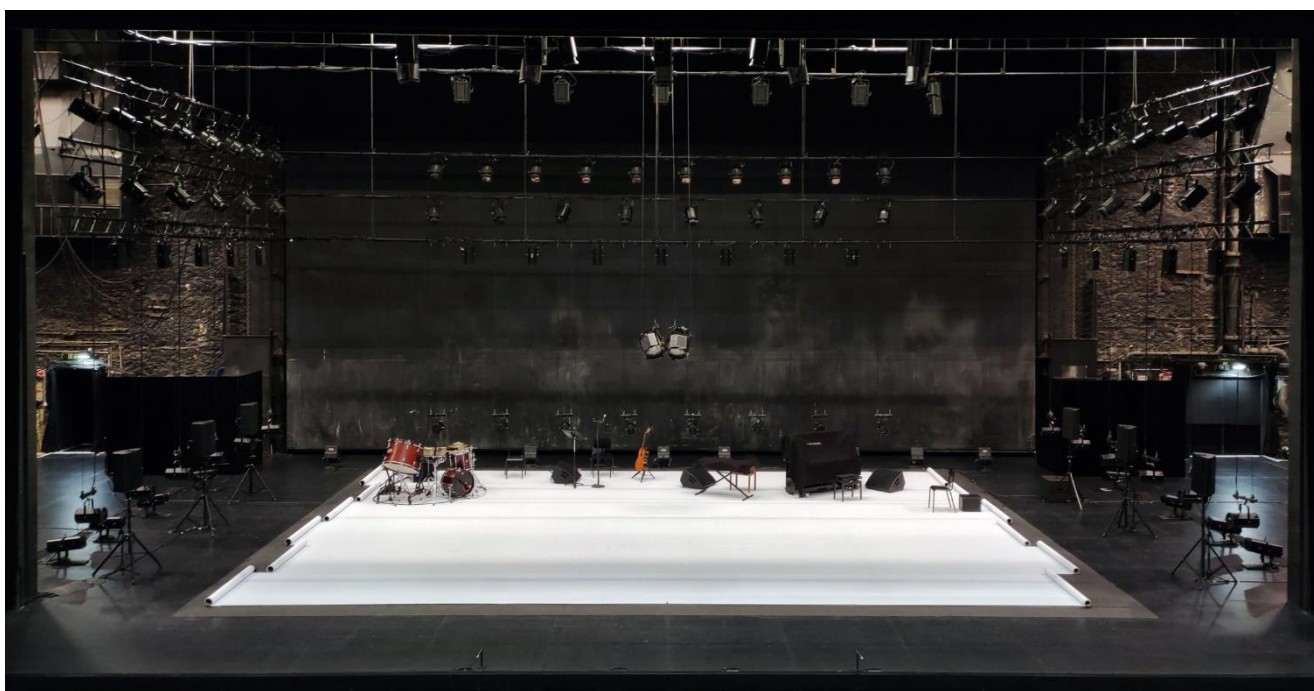
The scenography is composed of a white marley (11m wide x 8.8m deep, provided by the company) laid left/right, either directly on the black floor of the stage, or on the venue's black marley covering the entire stage.

The 3 musicians perform in the upstage part of the white marley: a drum and percussion set is stage right, the singer is in the center, a clavichord and a piano are stage left. The dancers also perform outside of the white marley, approximately 1.5m around it. The total performing space is 14m wide and 12.5m deep.

The lighting is designed as a "ring" on 3 sides of the white marley, with 3 heights of rigging. Upstage are floods on the floor to light the back wall of the stage. 2 units of 5kw fresnel hang in the middle of the stage at 3m high.

Microphones in front and on each side of the white marley amplify the flamenco steps. All the instruments are amplified. The 2 dancers and the singer have wireless mics.

Upstage on each side of the white marley is a quick costume change space. To be provided by the venue, a wardrobe person (dressed in black) is needed during the performance.



TECHNICAL SPECIFICATIONS

STAGE

- **Bare stage with no masking.** No border, no legs, no curtain except the main curtain, which is used at the beginning of the performance if its position is in front of the white marley. If not, we can perform without it.
- **Usual size of the performance space: 14m wide x 12.5m deep**, with the white marley provided by the company (the usual size, 11m wide x 8.8m deep, can be adjusted)
 - Proscenium width: *12m minimum*
 - Usual depth from apron to back wall: 12.5m (with 1.5m in front of the white marley and 2m between the white marley and the back wall). *11m minimum*
 - Height of the fly-bars: *7m minimum*
 - The floor of the stage is of black wood, or covered with the venue's black marley
- **2 quick costume change spaces on stage** must be constructed with black frames (1 space on each side of the white marley, upstage). Size: ±1.5m long x 1m deep x 2.5m high. Please provide for each space: 1 chair, 1 cloth rack, 1 mirror, 1 small table and 1 blue lamp controlled by the lighting board.
- Please provide 3 black chairs without armrest for the musicians

Please provide 4 red apples for each performance, preferably organic and not juicy (they are props)

SOUND & BACKLINE (see attached plot of the boxes on stage)

The sound engineer of the company is Spanish and also speaks English.
The sound desk must be located at the back of the house, in the center, not in a tech booth

All the backline equipment and microphones listed below must be provided by the venue.
Tuning of the piano upon delivery and each performance day (during lunch break).
The company provides a clavichord (size of the travel case: 114 x 38 x 22 cm; weight: 19kg) and small percussions (Cymbal, bells...). Extra luggage costs might apply for the travel of the two musicians by plane (from Sevilla, Spain).



Drum and Percussion Set



Vocal and Guitar



Clavichord and Piano

FOH

Mixer	1 YAMAHA CL5 + 1 RIO 3224
P.A.	LINE ARRAY SYSTEM L'ACOUSTIC, D&B, MEYER SOUND System power will be based on venue capacity and able to supply 110 db at a flat frequency response from 20 to 20.000 hz at the area of audience.

MONITORS

Mixer	No need
Sidefills	6 x L'acoustic, D&B, Meyer or similar (on stand, 1.6m high) 1 x Sub L'acoustic, D&B, Meyer or similar
Monitors	2 x Genelec 8030 (on straight mic stand) 2 x Wedge L'acoustic, D&B, Meyer or similar

WIRELESS SYSTEMS

4	Shure Axient AD4D
4	Shure UR1M (<i>Micro-bodypack transmitter</i>)
2	Shure Amp.&Splitter RF

BACKLINE

1	Upright Piano U1 size (tuning at A 440)
1	Piano stand (X shape) (<i>note: for the clavichord</i>)
1	Concert bass drum <u>with stand</u> : Kolberg or Adams 36"x18" (or similar)
1	Concert tom-tom 2 heads <u>with stand</u> : Kolberg or Adams 16"x12" (or similar)
1	Bass drum: Gretsch Usa Custom or Yamaha Maple Custom 20"x14" (or similar)
1	Snare drum: Gretsch Usa Custom or Yamaha Maple Custom 14"x5" (or similar)
1	Bongó: Lp 793X Galaxy Giovanni
1	Bass drum pedal: Yamaha FP8500C (or similar)
2	Concert snare stand extra large: Gibraltar 5706EX (or similar)
1	Bongó stand: Lp 330
1	Cymbal boom stand: Yamaha CS865 (or similar) (<i>note: the cymbal is provided by the company</i>)
1	Drum throne extra large: K&M 14056 (or similar)
1	Percussion table: K&M 13500 (or similar)
1	Classic Guitar
1	Guitar stand

MISCELLANEUM

1	Intercom system (4 points)
1	Black music stand with light
3	Black chair without armrest

INPUT LIST

<u>CH.</u>	<u>INSTRUMENT</u>	<u>MICROPHONE</u>	<u>STAND</u>	<u>NOTE</u>
1	CONCERT BD 1	SHURE BETA52	Short	
2	CONCERT BD 2	DPA D-VOTE	Dc 4099	
3	CONCERT TOM	SHURE BETA98 D/S	A98d	
4	BD OUT	SHURE BETA52	Short	
5	BD IN	SHURE BETA91	-----	
6	SN	SHURE BETA98 D/S	A98d	
7	BONGO	DPA D-VOTE	Dc 4099	UHF
8	OH L	AKG 414	Medium	
9	OH R	AKG 414	Medium	
10	WAVE DRUM L	DI RADIAL J48	-----	
11	WAVE DRUM R	DI RADIAL J48	-----	
12	PIANO LOW	DPA 4099	Pc 4099	
13	PIANO HIGH	DPA 4099	Pc 4099	
14	CLAVICHORD	DPA 4061	-----	
15	VOCAL 1	DPA 4066	Dual-Ear Headset Beige	UHF
16	VOCAL 2	NEUMANN KMS 105	Big + plate for 2 mics	
17	VOCAL 3	SHURE BETA87		
18	FLAMENCO DANCER	DPA 4061	-----	UHF (micro pack)
19	JANN MIC	DPA 4066	Dual-Ear Headset Beige	UHF (micro pack)
20	SHOTGUN MIC 1	SENNHEISER MKH416	Short	
21	SHOTGUN MIC 2	SENNHEISER MKH416	Medium	
22	SHOTGUN MIC 3	SENNHEISER MKH416	Short	
23	SHOTGUN MIC 4	SENNHEISER MKH416	Medium	
24	FRONT 1	CROWN PCC 160	-----	
25	FRONT 2	CROWN PCC 160	-----	
26	FRONT 3	CROWN PCC 160	-----	
27	FRONT 4	CROWN PCC 160	-----	
28				
29				
30	SPARE VOC	DPA 4066	Dual-Ear Headset Beige	UHF
31	SPARE TAC	DPA 4061	-----	UHF (micro pack)
32	SPARE JANN MIC	DPA 4066	Dual-Ear Headset Beige	UHF (micro pack)

NOTES

1.-	Power stabilizer and lights for the mixer and the racks
2.-	<i>It is very important the percussion stands and complements are extra large as specified in the backline section. Percussionist plays standing up.</i>
3.-	At least one intercom point must be wireless
4.-	For any change, please contact to the sound engineer of the company

LIGHTS (see attached Theoretical Lighting Plot)

Please provide plywood sheets for protection in order to move the lift on the white marley for the focusing of the lights rigged on the 3 fly-bars above the marley.

The rest of the lighting plot is composed of a 3 side ring around the white marley and rigged outside of it:

- 2 side bars are rigged one under the other (8m long, at 7m and 6m high), on each side of the marley, at 2m from the edge of the marley,
- 2 backlight fly-bars are trussed together one under the other, at 80cm from the upstage edge of the marley, at 7m and 6m high to have the same configuration as the side bars,
- from each lower bar at 6m high, parcans are rigged individually with "swings" (provided by the company) at 1.5m high.

In the middle of the white marley, 2 fresnels of 5kw hang at 3m high, side by side, rigged with ropes or slings directly on their yoke.

Lighting equipment to be provided:

- 5kw Fresnel without barndoors: 2
- 2kw PC without barndoors: 12
- 1kw PC without barndoors: 43
- PARCAN 64 CP 62 MFL: 33
- 2kw Profile zoom 15°-40°: 9 (foh)
- 2kw Profile zoom 29°-50°: 2
- 1kw Profile zoom 16°-35°: 5
- 1kw Profile zoom 28°-54°: 8 (floor)
- 1kw Asymmetric flood: 9 (floor)
- Floor stand for profiles and floods: 18

- 1 light for music stand, controlled by the lighting desk (halogen bulb, no color filter)
- 2 lights for the quick costume change spaces, controlled by the lighting desk (Lee 201 filter)

- 3kw channels: 88 (14 on the floor)
- 5kw channels: 2
- Lighting desk with programmable cues and submasters (same as Avab Congo/Cobalt or ETC)

- LEE filters: 152 – 162 – 200 – 202
- ROSCO frost: 114 – 119 – 132

The rigging equipment required for the setup of the side bars (slings, spansets, hooks, tubes or ladder beam trusses preferably black...) must be provided by the venue.

The company provides the "swings" for the rigging of the individual parcans.

It consists of a wooden batten with 2 ropes and an electric extension cable (see picture). The connection to the main electric feed is done on the lower bar (6m high) where the ropes will be rigged.



5kw fresnels hanging side by side by their yoke



Individual parcan rigged onto the "swing" provided by the company



Lights and sound side setup

EQUIPMENT OF THE COMPANY

The equipment of the company (6 items) is transported by a freight company in a small truck (20m3). The delivery and pick-up are usually scheduled without the presence of the technical managers of the company, before D-1 then on the following day of the last performance. Packing of the equipment:

- 3 ski bags with wheels, for our white marley (size each: 190 cm long x 35 x 30 ; weight each : 45kg)
- 2 travel bags with wheels, for the "swings" (size: 90 x 40 x 40 cm ; weight : 18kg)
- 1 suitcase for the costumes and accessories (size: 80 x 50 x 35 cm ; weight : 20kg)

REQUIRED CREW & WORKING HOURS

The setup of the side bars, the rigging of the lights (except the individual parcans on "swings") and the removal of the maskings (legs, borders, backdrop) must be done before the load-in day, in accordance with the provided stage and lighting plot.

The load-in day with the presence of the company's technical managers starts at D-1. We need 5 periods of 4-hours prior to the performance.

We may need a rehearsal room for the dancers on the afternoon of D-1 and/or on the morning of D-day.

The cleaning of the stage and the wings must be done before the rehearsal and performance.

Date	Usual Technical Schedule	Stage	Lights	Sound	Wardrobe
D-1	<i>sound setup without the sound engineer of the company</i>				
9h00 - 13h00	Stage setup (white marley ; quick costume change spaces) Lights setup (individual parcans on the company's "swings") Delivery of the backline. Setup of the sound and backline, input patch Washing and ironing of the costumes	3	3	1	1
<i>13h00 – 14h00</i>	<i>Tuning of the piano (A 440) during the lunch break</i>				
14h00 - 18h00	Focusing of the lights	2	3		
14h00 - 18h00	Sound and backline setup			1	
19h00 - 22h00	Focusing of the lights	1	3		
D					
9h00 - 13h00	Sound setup with the sound engineer of the company. Sound tuning			1	
10h00 - 13h00	Stage and lights finishing. Lights programming	2	2		
<i>13h00 – 14h00</i>	<i>Tuning of the piano (A 440) during the lunch break</i>				
14h00 - 16h00	Get-in musicians and sound tuning with the musicians	1	1	1	
16h00 - 18h00	Step by step run through	1	1	1	
14h00 - 18h00	Ironing of the costumes. Costume repairs might be necessary. Rehearsal of the quick change				1
19h00 - 19h30	Stage cleaning and setup of the performance	1	1	1	1
19h30	Opening of the house (the main curtain is closed)	1	1	1	1
20h00 - 21h30	Performance 20h00	1	1	1	1
21h30 - 23h00	Strike and load-out of the company's equipment: white marley, "swings", musical instruments Drying of the costumes on hangers with heating fans	2	2	1	1

PLEASE NOTE: a wardrobe person is required during the performance to assist one of the dancers in the quick costume change space. The wardrobe person must wear black clothing. Thank you.

WARDROBE INSTRUCTIONS

All the costumes are delicate: quick cold wash on a delicates program with a detergent for darks ; open air drying on hangers.

Costumes List

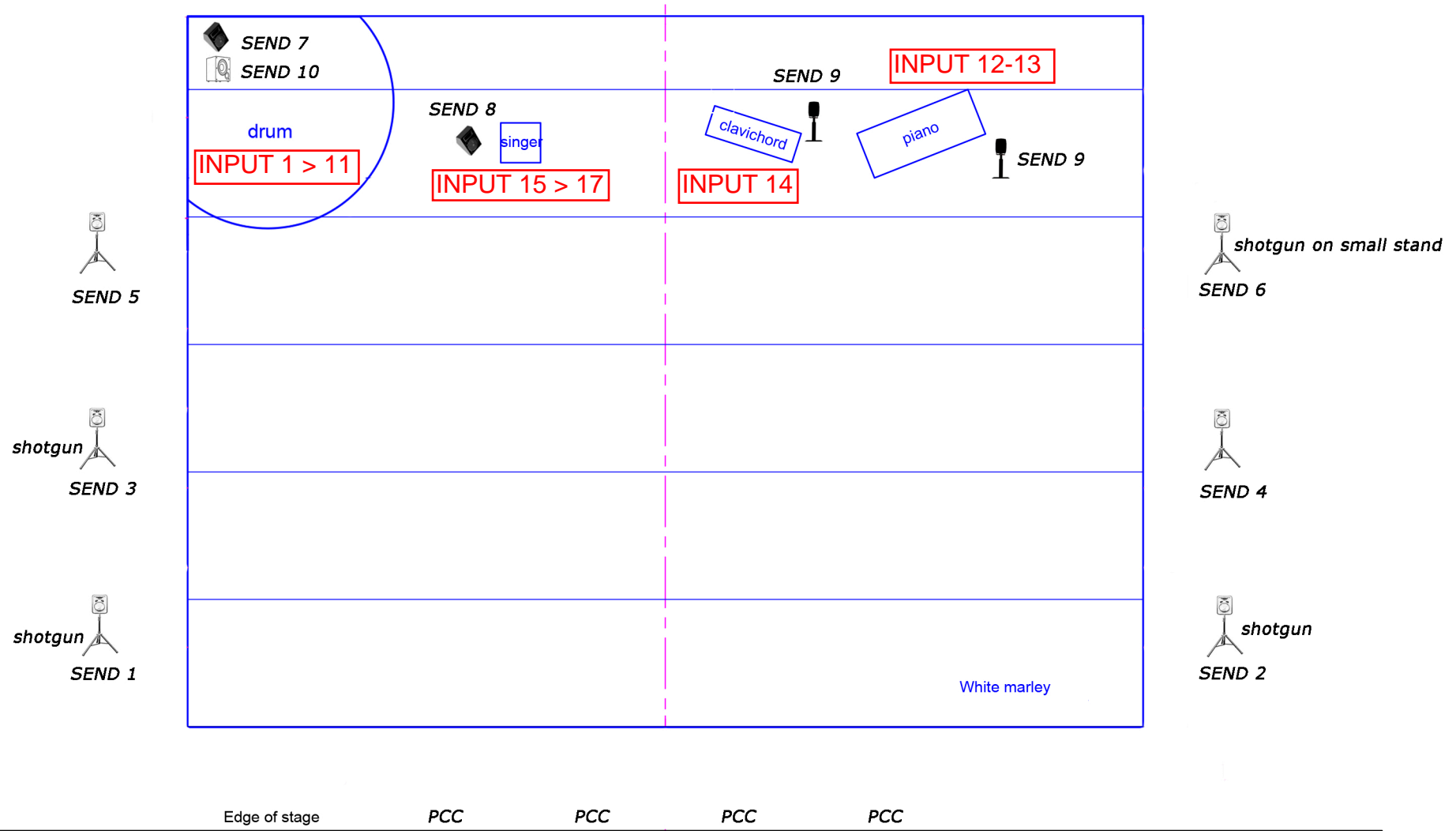
Jann Gallois	David Coria
<ul style="list-style-type: none">- 2 pairs of black pants- 2 lace black tops with short sleeves- 1 black see-through blouse without sleeves- 2 black panties- 1 black bra- 1 pair of black knee pads- 1 evening dress with silver sequin (<i>no washing</i>)- 1 nude holder on a waist band for the wireless transmitter/sumo battery pack- 1 pair of silver high heel shoes	<ul style="list-style-type: none">- 1 pair of black pants- 2 black tank tops- 2 black see-through shirts with long sleeves- 2 black boxer shorts- 2 pairs of black socks- 1 pair of black knee pads- 1 nude holder on a waist band for the wireless transmitter- 1 nude calf band

- Washing of the costumes upon arrival of the company: no wardrobe person required, the company's technical manager can do it. Air dry on hangers overnight.
- 1 wardrobe call is required on the afternoon of each performance: ironing of the costumes. Costume repairs might be necessary.
- Costume cleaning between 2 performances: quick cold wash after the performance ; open air drying on hangers overnight ; ironing on the afternoon of the next day.
- 1 wardrobe call is required after the last performance during the load-out: drying on hangers with heating fans to have the costumes dry before storage

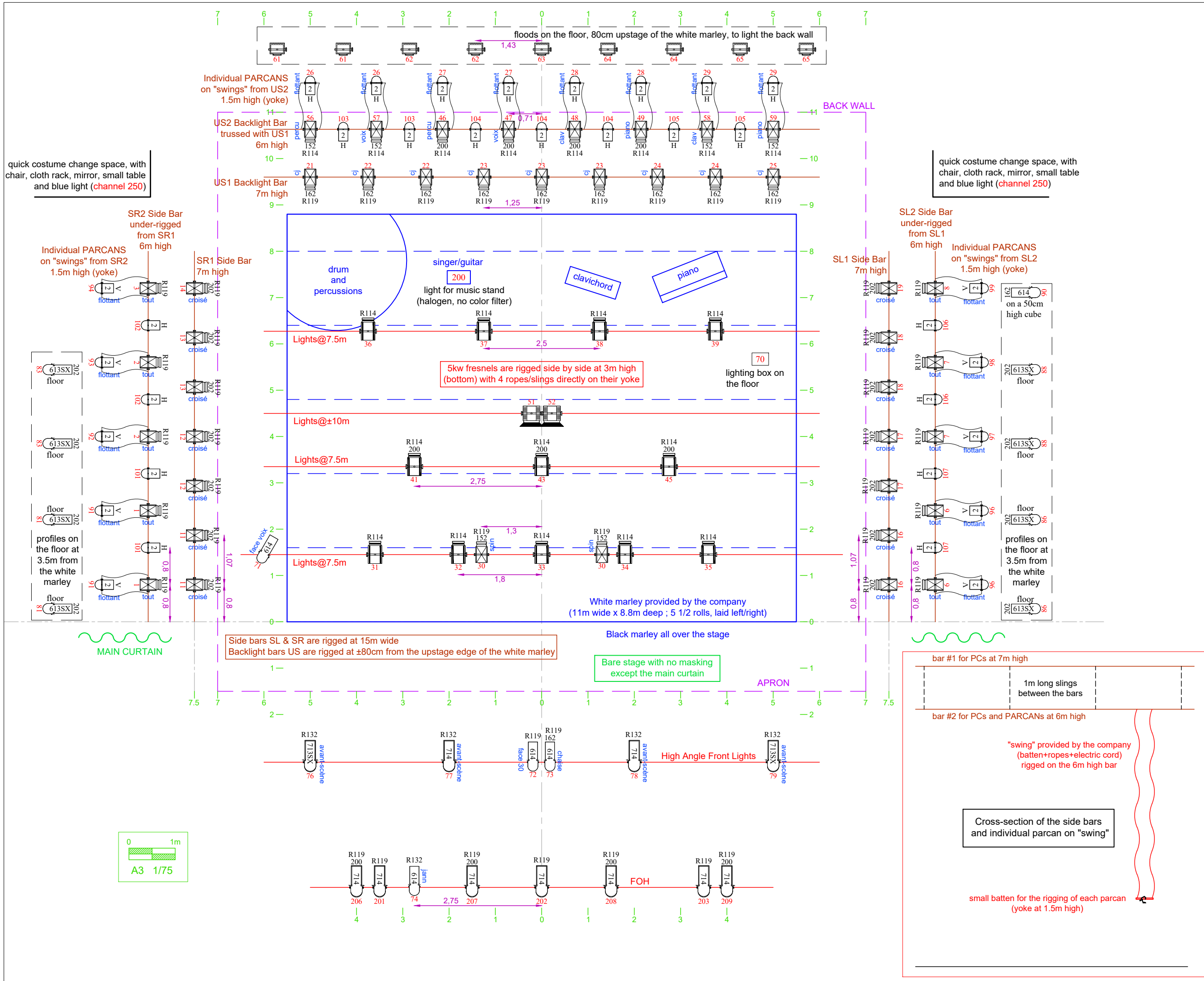
DRESSING ROOMS & CATERING

- At least 3 dressing rooms for the dancers and musicians, with restroom, shower, towels and soap
- 1 dressing room for the technical managers
- 1 dressing room/production office, with a window, for the touring manager
- Please provide internet access and WIFI passwords

- Please provide still water (water fountain), fresh fruit (banana), unsweetened almonds and nuts, chocolate bars (90% and 100%), honey, fruit juice, coca-cola, tea and coffee
- Chipi Cacheda has a dairy-free diet
- Jann Gallois has a vegan and gluten-free diet



IMPERFECTO
Cie Burnout / Jann Gallois
Stage Plot



- 5kw Fresnel without barndoors x 2
- 2kw PC without barndoors x 12
- 1kw PC without barndoors x 43
- PARCAN 64 CP 62 MFL x 33
- 2kw Profile zoom 15°-40° x 9 (floor)
- 2kw Profile zoom 29°-50° x 2
- 1kw Profile zoom 16°-35° x 5
- 1kw Profile zoom 28°-54° x 8 (floor)
- 1kw Asymmetric flood x 9 (floor)

LEE color filters

152	1kw pc	6
162	1kw pc	2
200	2kw profile	4
202	1kw pc	4
	2kw pc	3
	1kw profile	8
	1kw pc	14

Floor stand for profiles and floods: 18

3kw channels: 88 (14 on the floor)

5kw channels: 2

1 light for music stand, controlled by the lighting desk (halogen bulb, no color filter)

2 lights for the quick costume change spaces, controlled by the lighting desk (Lee 201 filter or LED)

ROSCO frosts

R114	1kw pc	8
R114	2kw pc	12
R119	1kw profile	7
R119	2kw profile	7
R132	1kw pc	35
R132	1kw profile	1
	2kw profile	4

IMPERFECTO
 Cie Burnout / Jann Gallois
 Theoretical Lighting Plot
 Tech Rider March 2024
 technique@cieburnout.com