

MANDALA
*a week of workshop and a performance
for 20 non-professional dancers*

Tech Rider

Date of issue: July 2022

Technical Contact:

Company Technical Manager: Cyril Mulon
+ 33 6 32 07 08 89
technique@cieburnout.com

Technician on tour: Guillaume Giraudo
+ 33 6 09 20 52 36
guillaume.giraudo@neuf.fr

Administration:

Sébastien Castella
+33 7 80 05 62 56
administration@cieburnout.com

Mailing address:
10 rue champeil - 63000 Clermont-Ferrand
FRANCE

Production and Booking:

Manon Martin
+33 6 18 98 34 12
production@cieburnout.com

The venue shall provide complete technical specifications (description of the stage and rigging possibilities of the space; masking, light and sound equipment; technical team's contacts...) including a ground plan and a cross section of both the house and stage at a preferable scale of 1/50 in pdf. An Autocad file (autocad 2010 format) of the venue is also required.

A technical schedule and a specific lighting plot with the stage configuration adapted to the venue will be provided in return.

GENERAL INFORMATION

Running time: 25 minutes

Company:

- 1 technical manager / lighting and sound manager
- 1 or 2 assistant choreographer (for the workshop and the performance)
- 1 choreographer (occasionally)
- 1 tour manager (occasionally)

TO BE PROVIDED FOR THE WORKSHOP WITH THE AMATEUR DANCERS

- **for all workshops including the day of the performance, the venue must provide a rehearsal room (dance studio), minimum size of 12m wide and 11m deep, equipped with a marley covered floor and a comfortable lighting,**
- basic sound system in the rehearsal room, equipped with a minimum of 2 speakers on stands (1 on each side of the room), 1 simple sound mixer with 4 inputs, 1 mini-jack cable to connect the headset output of a computer and 1 SM 58 microphone,
- 2 tables and 2 chairs, as well as electric multisockets, for the sound mixer and the company's computer,
- if the room is big enough, please provide 20 chairs and 4 or 5 tables for the workshop participants,
- please provide a water fountain,
- restroom and shower facilities for the participants.

STAGE CONFIGURATION FOR THE PERFORMANCE

The performance space is an Italian black box (12 m wide and 9m deep), upstage is a white cyclorama framed by legs and a border at 12m wide and ± 5.7 m high.

A white marley covers the performance space and wings.

The cyclorama is lit from the back with floods (2m away).



PLEASE NOTE: for smaller stages, if the side walls are black and clean, we can perform with no legs, however legs remain required in front of the cyclorama.

TECHNICAL SPECIFICATIONS

STAGE

- Italian type black box (with 4 or 5 wings with borders): 12m wide x 9m deep [*minimum: 10m x 8m*]
- Total width from side wall to side wall: 16m [*minimum 12m*]
- Total depth from apron line to back wall: *minimum 9.5m*
- Height of fly-bars or grid: 6m *minimum*
- White PVC rear-projection Cyclorama: the width is 1m bigger than the opening of the legs. The floods are 2m away from the cyc
- White marley on the entire stage, wings included
- Please note that the main curtain is not used

The white marley and white cyclorama are to be provided by the venue.

PLEASE NOTE: we travel with 1 suitcase of costumes for the 20 participants (45 x 25 x 69 cm ; 18kg)

LIGHTS (*see attached Theoretical Lighting Plot*)

The lights desk and the sound desk are side by side: the technical manager of the company operates both desks during the show.

- 2kw PC without barndoors: 3
- 1kw PC with barndoors: 17 (4 on stand)
- 1kw Profile zoom 15°-35°: 6 (foh)
- 1kw Profile zoom 28°-54°: 2
- 1kw Asymmetric flood: 16 (8 on the floor)

- 8 floor stands for floods
- 4 stands for PC (height of the lens: 1.5m)

- 2kw channel: 30 (6 on the floor)
- Light desk as Avab Congo/Cobalt (chasers already programmed on a show file)
- Usual height of the lighting flybars: 7-7.5m

- LEE filter: 053 – 103 – 108 – 202 – 205
- ROSCO frost: 114 – 119 – 132
- Silk filter (Lee 228 or Rosco 104: vertical silk) on all the floods

SOUND

The sound desk and the lights desk are side by side: the technical manager of the company operates both desks.

The sound system needs to use professional speakers and processors (L Accoustic, Meyer, D&B, Nexo, Amadeus etc...) and must be suitable for the size and the shape of the house. In the case of a large house and/or with balconies, please provide extra speakers with delay.

Position of the speakers:

- FOH: stereo sound system suitable for the house with independent subwoofers on the proscenium
- Stage monitors: 4 speakers (12" or 15") stereo (2 separate channels) on stands in the side wings ("front monitors" in the first wing; "upstage monitors" in the wing before the last one)

Mixing desk: *the soundtrack is played from the company's computer*

- Professional digital sound desk which allows controlling each speaker independently (eq, volume, delays...)
- 2 DI + 1 mini-jack stereo cable to connect the headset output of the computer to the mixing desk
- 1 CD player (*spare*)
- for the rehearsals only: 1 hand held wireless microphone if possible and 1 talkback mic
- Clearcom capabilities between the light & sound desk and the stage

REQUIRED CREW & WORKING HOURS

The complete setup of the lights (with color filters on and soft patch done), the sound equipment and the stage (marley, legs, borders and cyclorama) must be done before the arrival of the company's technical manager, in accordance with the provided stage and lighting plot.

The day before the performance:

- 14h – 18h: focusing of the lights, with the white marley.
(1 lighting manager + 2 electricians ; 1 stage manager/fly-person)
- 18h – 21h or 19h – 22h: **with the workshop participants**: rehearsal, lights programming and sound tuning, run-through
(1 stage manager ; 1 lighting manager ; 1 sound manager)

The day of the performance:

- 1 hour for the technical finishings
(1 stage manager ; 1 lighting manager ; 1 sound manager)
- followed by 3 hours of rehearsal **with the workshop participants**
(1 stage manager ; 1 lighting manager ; 1 sound manager)
- Performance: 25 minutes
(1 stage manager ; 1 lighting manager ; 1 sound manager)
- Company's Load-out: none

PLEASE NOTE: the marley must be cleaned and mopped before each rehearsal and each performance.

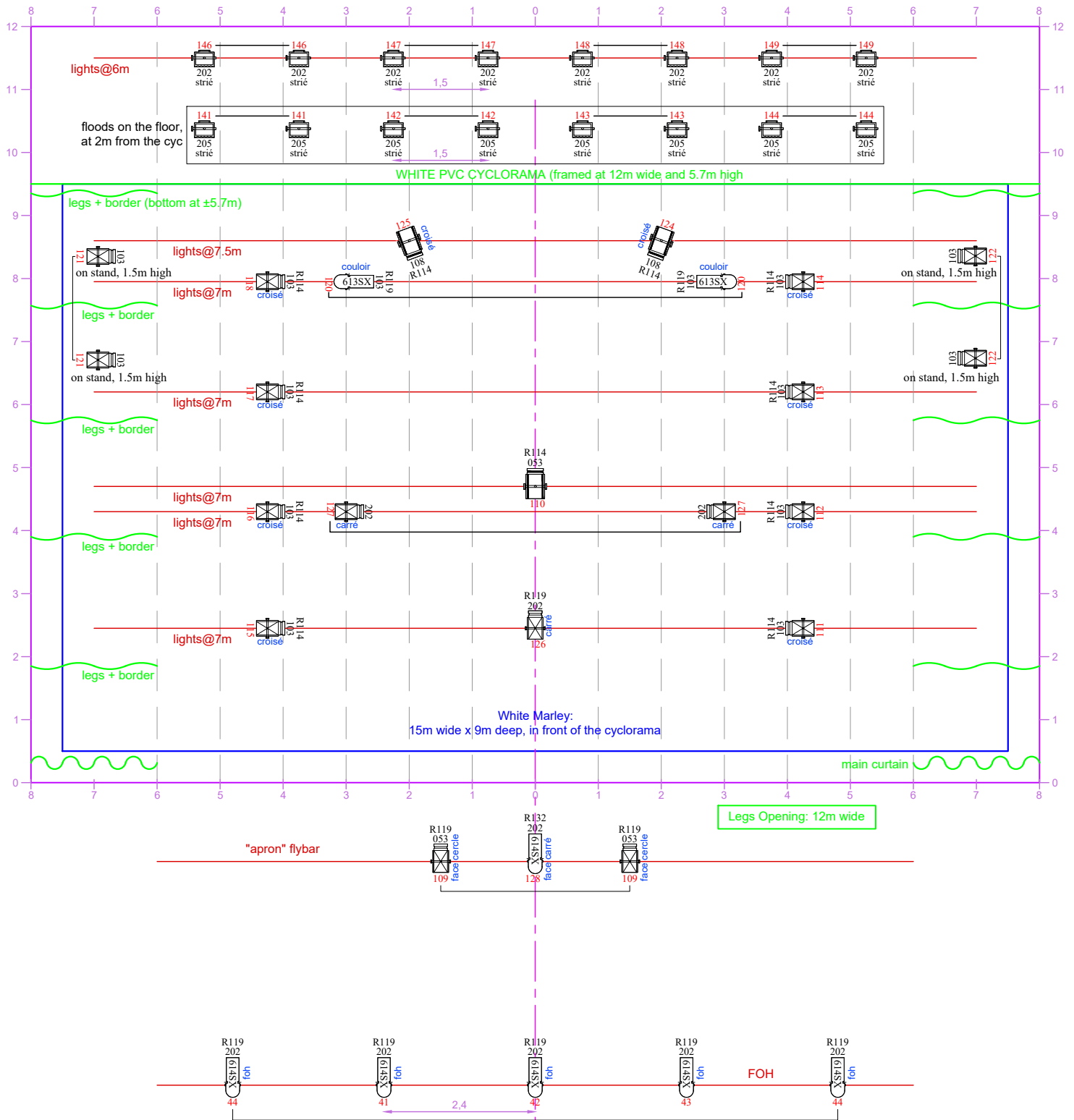
WARDROBE



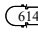
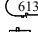

A costume cleaning is required on the first day of the workshop: 20 black capes. Quick cold wash + machine dry + ironing.

DRESSING ROOMS & CATERING

- Several dressing rooms for the workshop participants with restroom, shower, towels and soap
- 1 dressing room/production office, with a window, for the technical manager and touring manager
- Please provide internet access and WIFI passwords

- Please provide still water (water fountain), fresh fruit (banana), unsweetened almonds and nuts, cereal and chocolate bars, honey, fruit juice, coca-cola, tea and coffee
- Some assistant choreographers and workshop participants have vegetarian or halal diet



-  2kw PC without barndoors x 3
-  1kw PC with barndoors x 17 (4 on stand)
-  1kw Profile zoom 15°-35° x 6 (foh)
-  1kw Profile zoom 28°-54° x 2
-  1kw Asymmetric flood x 16 (8 on the floor)

8 floor stands for floods
 4 stands for PC (height of the lens: 1.5m)
 2kw channel: 30 (6 on the floor)
 Usual height of lighting flybars: 7-7.5m

LEE filter		
053	1kw pc	2
	2kw pc	1
103	1kw profile	2
	1kw pc	12
202	2kw pc	2
	flood	8
	1kw profile	6
	1kw pc	3
205	flood	8

ROSCO Frost		
R114	1kw pc	8
	2kw pc	3
R119	1kw profile	7
	1kw pc	3
R132	1kw profile	1
Vertical Silk: Lee 228 or Rosco 104	flood	16

MANDALA
 Cie Burnout / Jann Gallois
 Theoretical Lighting Plot
 Tech Rider - July 2022
 technique@cieburnout.com