

REVERSE

Tech Rider in progress for 2020 new production

Date of issue: December 2019

Technical Contact:

Cyril Mulon
+ 33 6 32 07 08 89
technique@cieburnout.com

Administration:

Sébastien Castella
+33 7 80 05 62 56
administration@cieburnout.com

Mailing Address:

*10 rue champeil - 63000 Clermont-Ferrand
FRANCE*

Production and Booking:

Manon Martin
+33 6 18 98 34 12
production@cieburnout.com

The Venue shall provide as complete as possible technical specifications (description of the stage and the rigging possibilities in the auditorium, masking equipment, light and sound equipment, technical contacts...) with a ground plan and a cross section of both the auditorium and the stage at a scale of 1/50 if possible. An Autocad file of the venue is also required.

A technical schedule and a specific lighting plot with the stage configuration adapted to the venue will be sent in return.

*Cie BurnOut / Jann Gallois
janngallois@cieburnout.com*

Maison des associations - 3 place Anatole France - 93310 Le Pré Saint Gervais - FRANCE

GENERAL INFORMATION

Running time: ±25 minutes

Company:

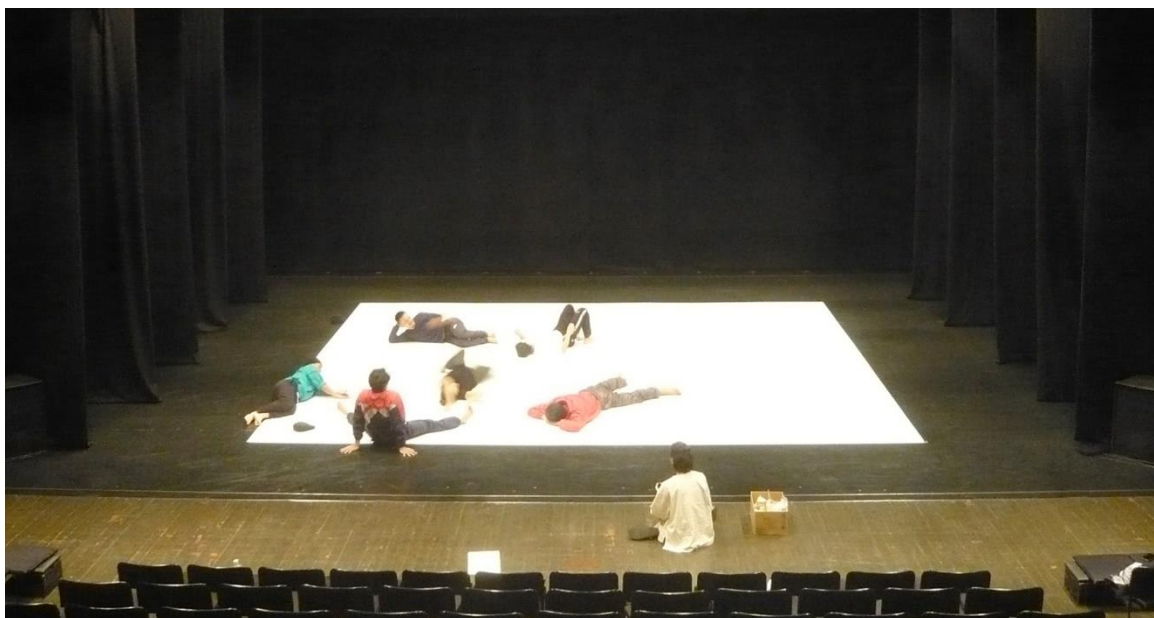
- 5 dancers (men)
- 1 technical manager / lighting and sound manager
- 1 choreographer
- 1 tour manager (occasionally)

STAGE CONFIGURATION

The performing space is an Italian type black box. A black marley covers the entire stage.

The scenography is a white rectangular space, 7m wide and 6m deep, composed of 30 polypropylene sheets taped on the floor. The sheets are taped together. 4 electro-luminescent wires are also taped on the floor and create glowing lines.

N.B.: please provide a space backstage with a clean and unobstructed floor, 7m wide and 1.5m deep, in order to store the white sheets in case of a shared evening.



TECHNICAL SPECIFICATIONS

STAGE

- Italian type black box (4 to 5 rows of legs with border): 11m wide x 9m deep [*minimum size: 9m x 8m, to be confirmed*]
- Total width from side wall to side wall: 15m [*minimum 12m*]
- Total depth from apron to back wall: *minimum 10m*
- Height of fly-bars or grid: *minimum 6m*
- Black marley all over the stage
- Main curtain

Equipment provided by the company:

- White polypropylene sheets
- Transparent tape
- White tape for marley

LIGHTS (see attached *Lighting Plot in progress*)

The lights and the sound desks are side by side: the technical manager of the company operates both desks during the show.

- 2kw PC or Fresnel: 4
- 1kw PC or Fresnel: 1
- 2kw zoom profile 15°-40°: 9 (foh)
- 1kw zoom profile 28°-54°: 8 (floor)
- PAR 64 CP 61 NSP: 4
- PAR 64 CP 62 MFL: 20

- 8 floor stands

- 2kw channels: 34 with 4 on the floor
- Please provide 1x16A AC and 1xDMX (3 points if possible) on the floor upstage left
- Light desk with programmable cues and crossfade (like Avab Cobalt)
- Regular height of the lighting fly-bars: 7m

- LEE color filters: 075 – 161 – 202 – 506 – 747
- ROSCO frost: 114 – 119

Equipment provided by the company:

- 1 dimmer rack (16A AC)
- 4 floods of 100w (as ballasts)
- 4 electro-luminescent wires with controller and 12V voltage transformer

SOUND

The lights and the sound desks are side by side: the technical manager of the company operates both desks during the show.

The sound system needs to use professional speakers and processors (L Accoustic, Meyer, D&B, Nexo, Amadeus etc...) and must be suitable for the size and the shape of the house. In case of a large house and/or with balconies, please provide extra speakers with delay.

Position of the speakers:

- FOH: stereo sound system suitable for the house with independent subwoofers on the proscenium
- Stage monitors: 4 speakers (12" or 15") stereo (2 separate channels) on stands in the side wings ("front monitors" in the first wing; "upstage monitors" in the wing before the last one)

Mixing desk:

- Professional digital sound desk which allows controlling each speaker independently (eq, volume, delays...)
- 1 CD player (*to be confirmed*)
- 1 hand held wireless microphone and 1 talkback mic (only for the rehearsals)
- Clearcom capabilities between the light&sound desk and the stage

REQUIRED CREW & WORKING HOURS

The complete setup of the lights and sound equipment and the black box has to be done before the arrival of the company, according to the lighting plot adapted to the venue that will be sent to you.

The day of the performance:

- Focusing of the lights: 4 hours (1 lighting manager + 2 lights technicians)
- Setup of the scenography (white sheets and e.l. wires): 1 hour (1 stage manager + 1 stage technician)
- Rehearsal/Cueing/Sound check/Run through: 2 hours 30 (1 stage manager, 1 lighting manager, 1 sound manager)
- Performance: 25 minutes (1 stage manager, 1 lighting manager, 1 sound manager)
- Load-out: 1 hour (1 stage manager + 1 stage technician, 1 lighting manager)

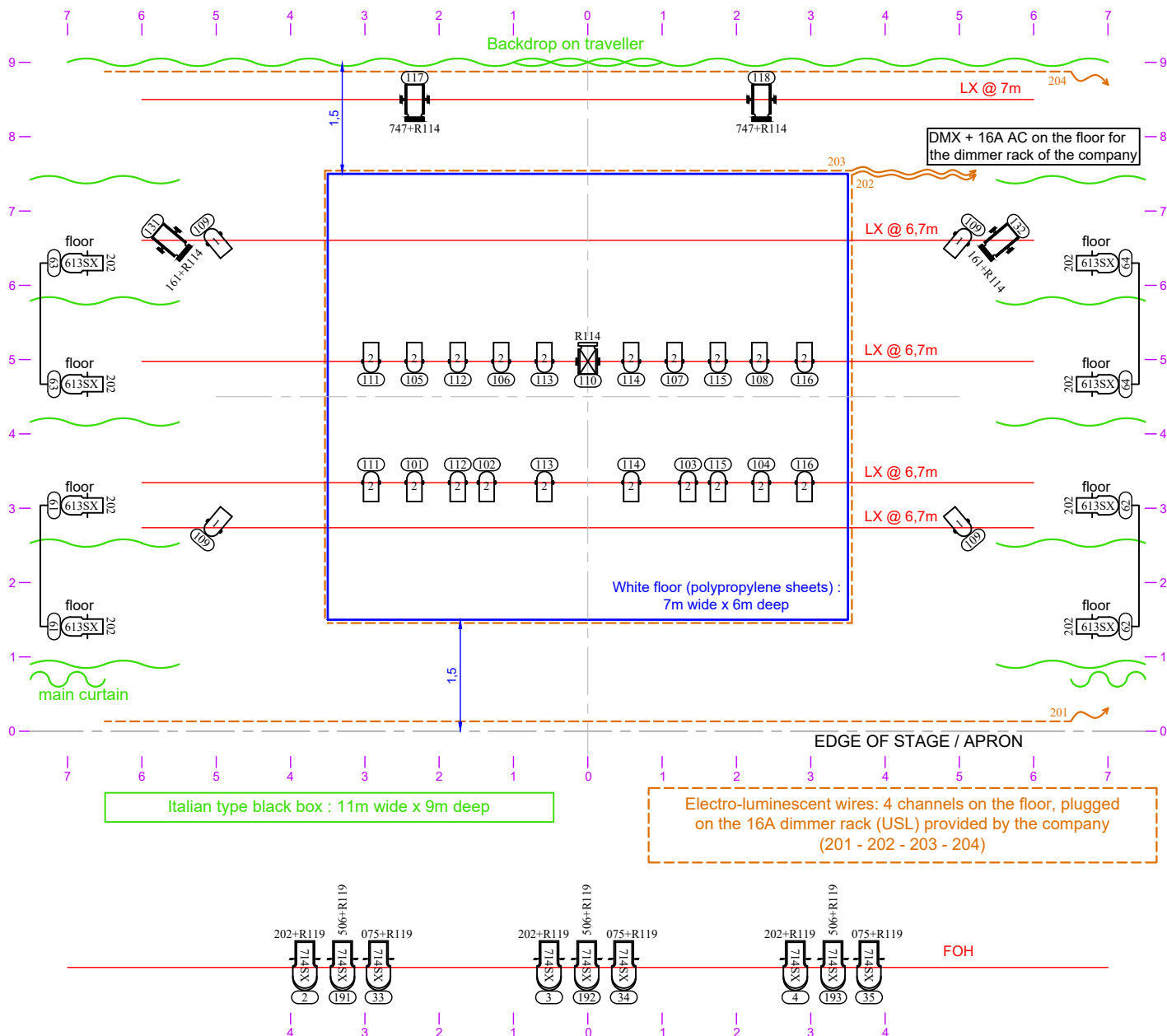
The black marley has to be very clean before taping the white sheets of our scenography.

WARDROBE

- 1 wardrobe call for the washing and the ironing of the costumes, in the morning of the day of the performance. The costumes are delicate: they are washed in a washing machine with a cold wool program. They dry on hangers in open air not in a dryer. The ironing/steaming of some costumes is done inside-out.
- Between 2 performances: washing, drying on hangers and ironing/steaming

LOGES & CATERING

- 3 dressing rooms for the dancers with WC, shower, towels and soap.
- 1 dressing room/production office, with a window, for the technical manager and touring manager, with an internet/WIFI access.
- Please provide still water in bottles or water fountain, fresh fruits (banana), unsweetened almonds and nuts, cereal and chocolate bars, honey, fruit juice, tea and coffee.
- Some dancers are vegetarian.



Liste des gélâtines		
LEE 075	découpe 2kw	3
LEE 161	pc 2kw	2
LEE 202	découpe 1kw	8
	découpe 2kw	3
LEE 506	découpe 2kw	3
LEE 747	pc 2kw	5
Rosco 114	pc 1kw	1
	pc 2kw	4
Rosco 119	découpe 2kw	9

- 2kw PC or Fresnel x 4
- 1kw PC or Fresnel x 1
- PAR 64 CP 61 NSP x 4
- PAR 64 CP 62 MFL x 20
- 2kw Profiles 15°-40° x 9 (FOH) (or 9 x 2kw PC)
- 1kw Profiles 28°-54° x 8 (floor)

8 floor stands

2kw channels: 34 (4 on the floor)
 1x16A AC and 1xDMX (3 points if possible) on the floor
 usptage left for the dimmer rack provided by the company

Color filters: Lee 075 - 161 - 202 - 506 - 747
 Rosco Frost: 114 - 119

REVERSE
Jann Gallois / Cie Burnout
 Lighting plot in progress for 2020 production
 December 2019
 technique@cieburnout.com

