

COMPACT

A duet choreographed by Jann Gallois

TECH RIDER

Artist:

Cie BurnOut

Jann Gallois

+33 6 36 88 24 12

cie.burnout@gmail.com

Maison des associations – 3 place Anatole France – 93310 Le Pré Saint Gervais – FRANCE

Production:

Sébastien Castella

+33 7 80 05 62 56

seb_castella@yahoo.fr

Mailing address:

2, rue Valmy – 63100 Clermont-Ferrand – FRANCE

Booking:

Diego Torres Sarroi

+33 7 77 69 70 13

diego.tsarroi@outlook.com

Technic:

Cyril Mulon

+ 33 6 32 07 08 89

cyril.mulon@gmail.com

GENERAL INFORMATION

Running time: 22 minutes
1 female dancer and 1 male dancer
1 technical manager (light, sound, stage)

The Venue shall provide as complete as possible technical specifications (description of the stage and the rigging possibilities in the auditorium, masking equipment, light and sound equipment, technical contacts...) with a ground plan and a cross section of both the auditorium and the stage at a scale of 1/50 if possible. An Autocad file of the venue is also required.

A technical schedule and a specific lighting plot with the stage configuration adapted to the venue will be sent in return.

TECHNICAL SPECIFICATIONS

STAGE

- Italian black box – minimum size: 10m wide x 8m deep
- Wall to wall width: 14m
- Black dance floor all over the stage
- FOH curtain

LIGHT EQUIPMENT *(see attached standard lighting plot)*

The light and the sound desks are side by side: the technical manager of the company operates both desks during the show.

- 2kw PC: 5
- 1kw PC: 26
- PARCAN 64 CP61 NSP: 2
- PARCAN 64 CP62 MFL: 10
- 1kw profile 25°-50°: 8

- 8 booms for sidelights (height: floor / 1,40m)
- 8 floor stands

- 30 channels of 3kw with 12 on the floor
- Light desk with programmable cues and crossfade

- LEE filters: 008 – 152 – 169 – 201 – 202 – 205 – 249 – 702
 - 008: 5 PC 2kw
 - 152: 6 PC 1kw
 - 169: 1 PC 1kw + 2 PAR
 - 201: 14 PC 1kw + 8 découpes 1kw
 - 202: 5 PC 1kw
 - 205+249: 2 PAR
 - 702: 8 PAR

- Rosco Frost: 114 – 119 – 132
 - 114: 6 PC 1kw, 5 PC 2kw
 - 119: 12 PC 1kw
 - 132: 8 profiles 1kw

SOUND EQUIPMENT

The light and the sound desks are side by side: the technical manager of the company operates both desks during the show.

- 1 professional CD player with autocue
- Standard FOH sound system with subwoofer
- 4 monitor boxes on stage (2 upstage, 2 downstage), installed in the wings, non-visible from the audience. Good bass and treble levels
- 1 sound desk
- EQ for FOH
- Clearcom between stage and light/sound booth

REQUIRED CREW & WORKING HOURS

The setup of the light equipment and black box is done before the arrival of the company, according to the light plot adapted to the venue that will be sent to you.

The day of the performance:

Light focusing: 3 hours

Rehearsal/Cueing/Sound check/Run through: 2 hours

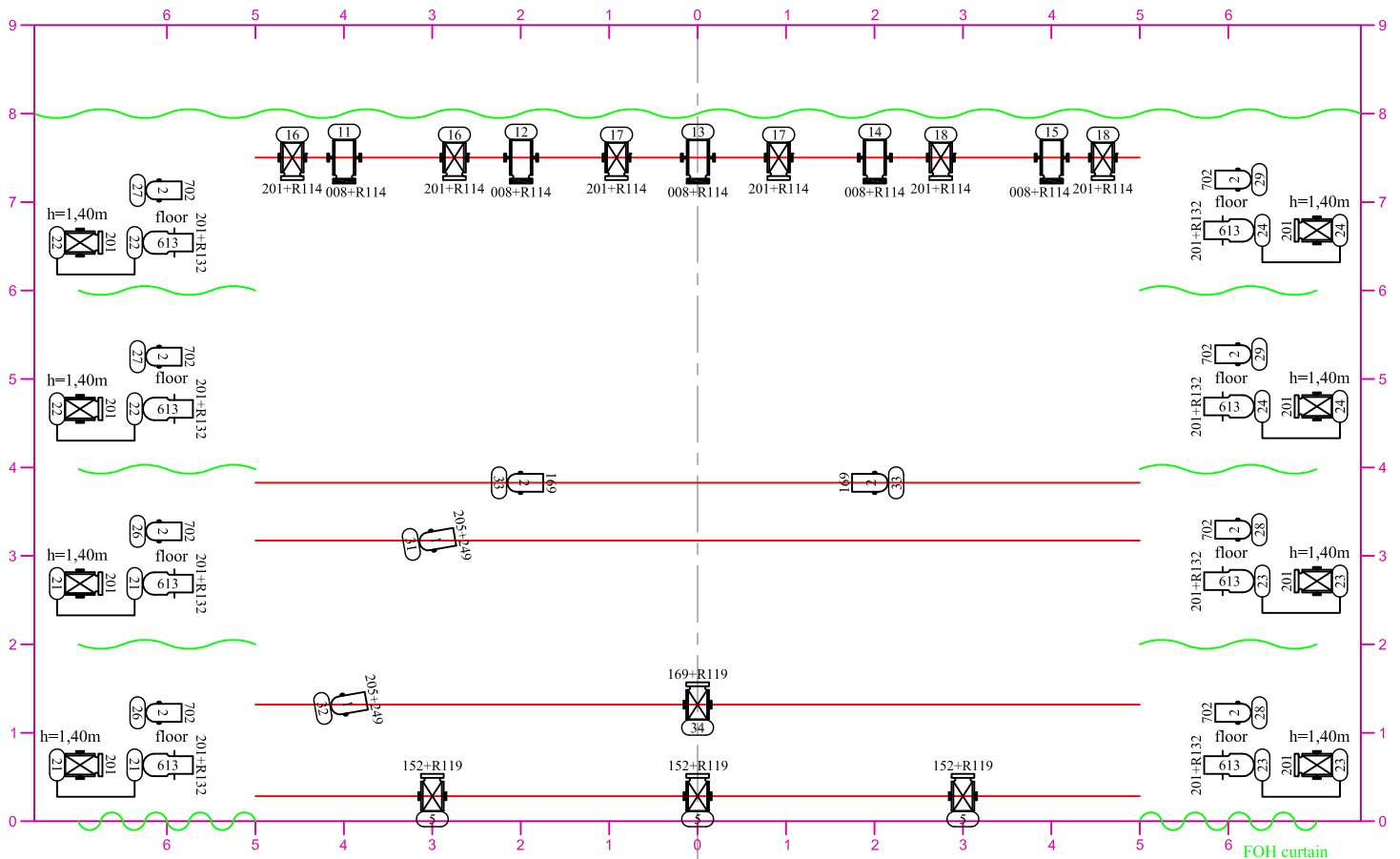
The dance floor needs to be very clean because most of the choreography is on the floor.

Required crew of the venue: 1 lighting manager + 1 light technician, 1 sound manager, 1 stage manager.

Please provide costume cleaning (washing and ironing) in case of several performances.

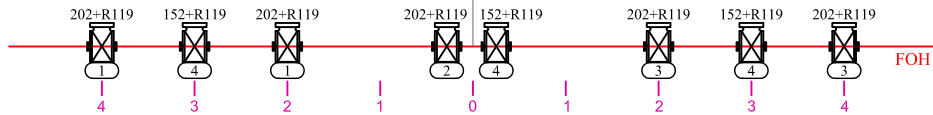
DRESSING ROOMS & CATERING

- 1 dressing room for the dancers with WC, shower, towels and soap.
- 1 dressing room/production office for the technical manager, if possible with an internet/WIFI access.
- Please provide still water in small bottles, fresh and dry fruits, cereal and chocolate bars, fruit juice, tea.
- Both dancers are gluten and dairy intolerant and do not eat pork.



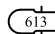
Italian Black Box : 10m wide x 8m deep


FOH curtain




 2kw PC x 5

 1kw PC x 26

 1kw profile 25°-50° x 8

 PARCAN 64 CP61 NSP x 2

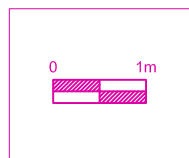
 PARCAN 64 CP62 MFL x 10

8 booms for sidelights (height: floor / 1,40m)
8 floor stands

30 channels of 3kw, with 12 on the floor
Height of the lighting pipes: 6m

LEE Filters:
008 - 152 - 169 - 201 - 202 - 205 - 249 - 702

Rosco Frost: 114 - 119 - 132



COMPACT
Jann Gallois Cie BurnOut

Standard Lighting Plot
 January 2016

cyril.mulon@gmail.com